

# LED B/L Specifications



Durapixel™

## Key Features

- Sunlight Readable
- LED Backlight
- -20°C~60°C Wide Temp.
- Low Power Consumption
- High Shock & Vibration Resistance
- 90% High Uniformity
- Low EMI Noise
- Wide Dimming
- Multiple Mounting Choices
- 70000hrs Life Expectancy



## DLF/DLH1255 (CMO N12113-L01)



Premium Optical Lamination of Clear and Matte Anti-Reflection Film  
Optical Bonding AR and AG Glass, Touch Panels, Optical Filters and Shields  
UV Inhibitor, Warranties, and Support  
Panelizer and Backlight Repair  
Display Optimization and Contract Assembly  
Consulting and Design Guidance

Photo provided by:  
Flat Panel Display Solutions LLC.  
info@FPDSolutions.com  
skype: sunlight.fpd  
Phone: 503-992-1242

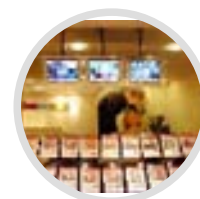
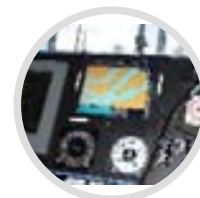
Model No.	DLF1255	DLH1255
<b>LCD Display</b>	12.1" LED Backlight LCD	12.1" LED Backlight LCD
<b>Display Area</b>	263.12 x 165.2mm	263.12 x 165.2mm
<b>Brightness</b>	1000 cd/m <sup>2</sup>	1000 cd/m <sup>2</sup>
<b>Resolution</b>	1280 x 800 (WXGA)	1280 x 800 (WXGA)
<b>Contrast Ratio</b>	500 : 1	500 : 1
<b>Pixel Pitch (mm)</b>	0.204(H) x 0.204(V)	0.204(H) x 0.204(V)
<b>Viewing Angle</b>	85° (H), 65° (V)	85° (H), 65° (V)
<b>Display Colors</b>	262K colors	262K colors
<b>Response Time</b>	16ms (Typical)	16ms (Typical)
<b>Sync</b>	LVDS x 1 Channel	LVDS x 1 Channel
<b>Power Consumption</b>	7.5W	12.5W
<b>LED Driving Board</b>	LI D12A	LI D12A
<b>Control Board (Optional)</b>		AD5621GA (Standard)
<b>F / R Control Button</b>		Power Switch, Menu, Select (+,-), Auto
<b>OSD Menu</b>		Brightness, Contrast, H/V Position, Color, Phase, Clock....
<b>Dimensions (WxHxD)</b>	277.1x180.8x7.14mm	277.1x180.8x7.14mm
<b>Weight</b>	275g	385g
<b>Optional</b>	<input checked="" type="checkbox"/> AOT <input checked="" type="checkbox"/> Touch Screen	

Specifications are subject to change without notice. All brands or product names are trademarks or registered trademarks of their respective companies.

<b>Control Board (Optional)</b>	AD5621GA/AD5621GD/AD5766GDVA
<input checked="" type="checkbox"/> AD5621GA	VGA+Audio
<input checked="" type="checkbox"/> AD5621GD	VGA+DVI
<input checked="" type="checkbox"/> AD5766GDVA	VGA+CVBS+S-Video+Audio (Optional DVI / Component)
<b>F / R Control Button</b>	5 Key / 4 Key (Optional)
<input checked="" type="checkbox"/> 5 Key	Power Switch, Menu, Select (+,-), Auto
<input checked="" type="checkbox"/> 4 Key	Power Switch, Menu, Select (+,-)

DLF= Panel+Driving Board

DLH= Panel+Driving Board+Control Board

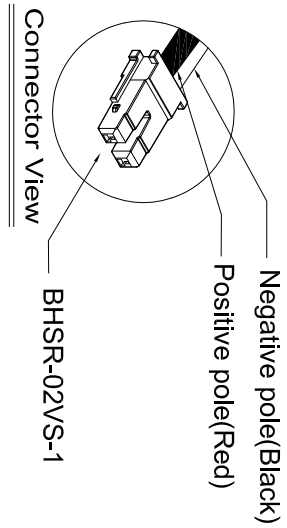
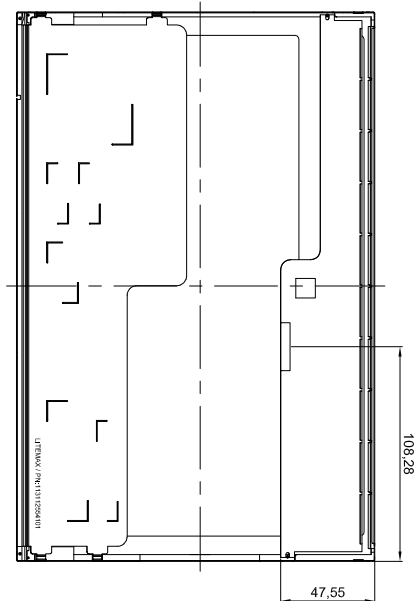
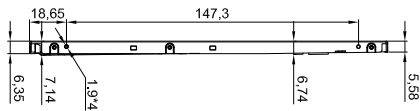
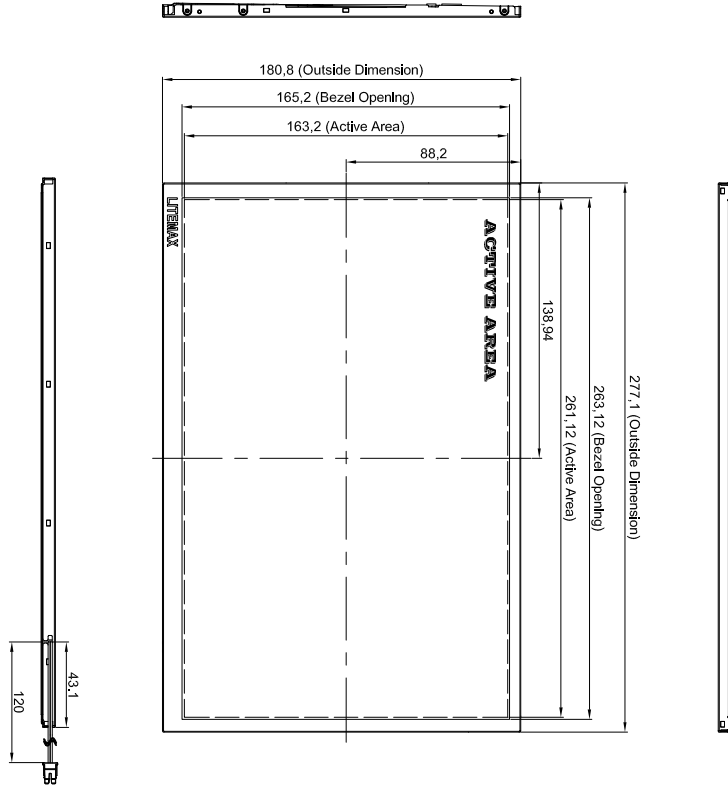


# LED B/L Specifications



Durapixel™

Outline Dimensions  
unit:mm



Product Inquiries to:  
Flat Panel Display Solutions LLC.  
info@FPDSolutions.com  
skype: sunlight.fpd  
Phone: 503-992-1242



Premium Optical Lamination of Clear and Matte Anti-Reflection Film  
Optical Bonding AR and AG Glass, Touch Panels, Optical Filters and Shields  
US Value Add, Warranty, and Support  
Polarizer and Backlight Repair  
Display Optimization and Contract Assembly  
Consulting and Design Guidance



Enrich your visual world....